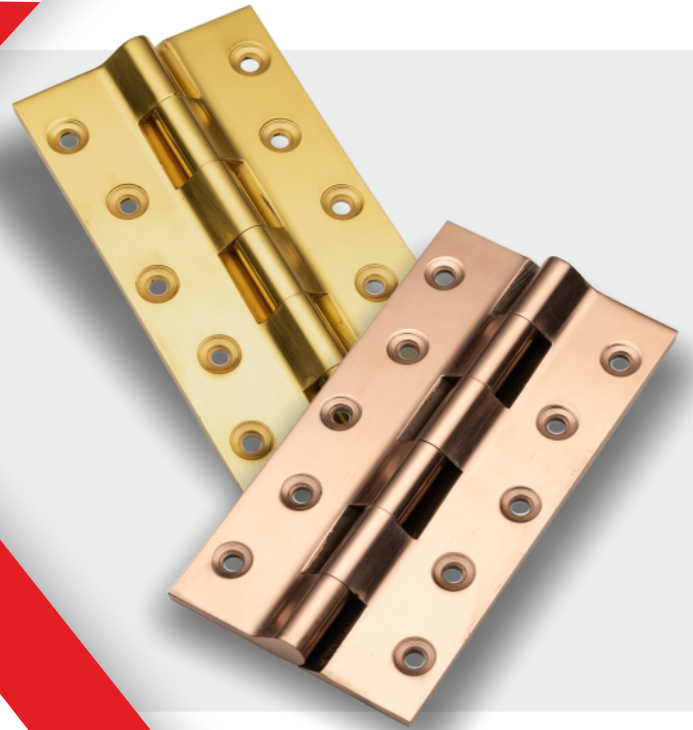


A TRUSTED COMPANY

**SWIPE**  <sup>®</sup>

ARCHITECTURAL HARDWARE FITTINGS



ALL TYPE OF  
HARDWARE  
FITTINGS



Proudly  
Made in  
**INDIA**



Manufacturing Hardware Products is all about achieving precision and perfection consistently. If you can do this, you can rule the market.

At **SWIPE** we have done the same. We firmly believe that the world of hardware is all about striking a fine balance between quality & precision. On one hand, it is pure art of touching hearts and creating impact with sheer brilliance in designs; whereas on the other hand, it is all about technology of achieving impeccable precision to deliver unmatched experience and performance.

We have applied the same principle to our whole range of Hardware products.

### Quality

At **SWIPE** flawless design & quality always comes first. All in-house, state-of-the-art production facility, we are capable of delivering products that are masterpiece in all the sense. With stringent quality controls at all the stages of the production, we ensure finest quality of all our offerings.

### Design

The Hardware Products by **SWIPE** are designed to win hearts and at the same time, function smoothly for years. The elegant finishes and soft grip, coupled with inner engineering with precision, make them perform as desired for years.

### Service

At **SWIPE** we believe in establishing relations and maintain them at any cost. Our timely deliveries and prompt services have raised the bars for dealer and customer outreach in the industry.

### Packaging

Each of our products always comes with highly reliable packaging so that the integrity of the products remains intact, till it reaches the end-user.





**BRASS  
HINGES**

Page No.01



**DOOR  
CLOSER**

Page No.09



**BRASS  
TOWER BOLT**

Page No.02



**KITCHEN  
FITTING**

Page No.10



**STEEL  
HINGES**

Page No.04



**TUBULAR  
LOCKS**

Page No.11



**STEEL  
TOWER BOLT**

Page No.05



**MORTISE  
HANDLE**

Page No.12



**STEEL  
HANDLE**

Page No.05



**AUTO  
HINGES**

Page No.14



**ALLUMINIUM  
TOWER BOLT**

Page No.06



**TELESCOPIC  
CHANNEL**

Page No.15



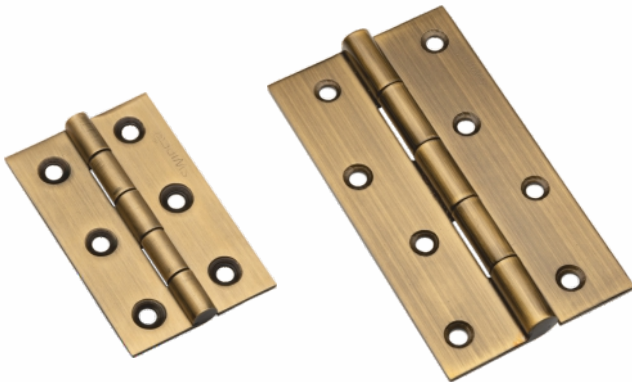
**SCREW**

Page No.07



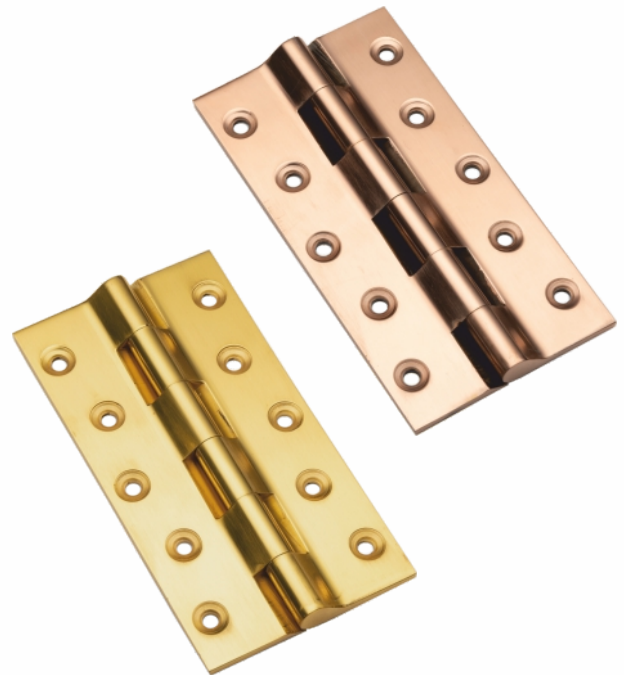
**DOOR  
FITTINGS**

Page No.16



**Brass Butt Hinges** Slow Motion

CODE	SIZE IN INCH	SIZE IN MM
1001	3 x 1/2 x 3/4 x 3/32	75 x 12 x 19 x 1.4
1002	3 x 3/4 x 3/4 x 3/32	75 x 19 x 19 x 1.4
1003	4 x 1/2 x 3/4 x 3/32	100 x 12 x 19 x 1.4
1004	4 x 3/4 x 3/4 x 3/32	100 x 19 x 19 x 1.4



**Brass Railway Hinges** Slow Motion

CODE	SIZE IN INCH	SIZE IN MM
1011	3 x 7/8 x 1/8	75 x 22 x 2.0
1012	3 x 1 x 1/8	75 x 25 x 2.0
1013	4 x 7/8 x 1/8	100 x 22 x 2.0
1014	4 x 1 x 1/8	100 x 25 x 2.5
1015	4 x 1.1/8 x 1/8	100 x 28 x 2.5
1016	4 x 1.1/8 x 5/32	100 x 28 x 3.0
1017	4 x 1.1/4 x 3/16	100 x 31 x 4.5
1018	5 x 1.1/8 x 1/8	125 x 28 x 2.5
1019	5 x 1.1/8 x 5/32	125 x 28 x 3.0
1020	5 x 1.1/8 x 5/32 (H)	125 x 28 x 3.5
1021	5 x 1.1.4 x 5/32	125 x 31 x 4.0
1022	5 x 1.1.4 x 3/16	125 x 31 x 4.5
1023	6 x 1.1.8 x 5/32	150 x 28 x 3.0
1024	6 x 1.1.8 x 5/32 (H)	150 x 28 x 3.5
1025	6 x 1.1.4 x 5/32	150 x 31 x 4.0
1026	6 x 1.1.4 x 3/16	150 x 31 x 4.5
1027	6 x 1.1/2 x 3/16	150 x 38 x 4.5
1028	8 x 1.1.4 x 3/16	200 x 31 x 4.5
1029	8 x 1.1.2 x 3/16	200 x 38 x 4.5
1030	10 x 1.1.2 x 3/16	250 x 38 x 4.5
1031	8 x 2 x 3/16	200 x 50 x 4.5
1032	10 x 2 x 3/16	250 x 50 x 4.5



**Brass L-Type Hinges** Slow Motion

CODE	SIZE IN INCH	SIZE IN MM
1005	3 x 1/2 x 6	75 x 12 x 6
1006	3 x 1/2 x 12	75 x 12 x 12
1007	3 x 1/2 x 19	75 x 12 x 19
1008	4 x 1/2 x 6	100 x 12 x 6
1009	4 x 1/2 x 12	100 x 12 x 12
1010	4 x 1/2 x 19	100 x 12 x 19



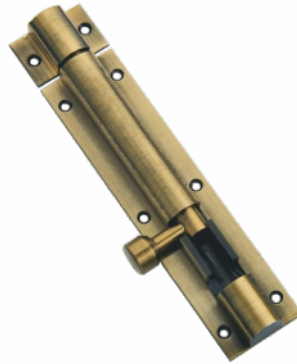
**Brass Bearing Hinges Slow Motion**

CODE	SIZE IN INCH	SIZE IN MM
1101	4 x 3 x 3	100 x 75 x 3
1102	5 x 3 x 3	125 x 75 x 3
1103	5 x 3 x 4	125 x 75 x 4
1104	5 x 3.1/2 x 4	125 x 88 x 4
1105	6 x 3 x 4	150 x 75 x 4
1106	6 x 3.1/2 x 5	150 x 88 x 5
1107	8 x 3.1/2 x 5	200 x 88 x 5
1108	10 x 4 x 5	250 x 100 x 5
1109	12 x 4 x 5	300 x 100 x 5



**Brass Round TB Medium (9mm)**

CODE	SIZE IN INCH	SIZE IN MM
1501	3" x 3/8	75 x 9mm
1502	4" x 3/8	100 x 9mm
1503	6" x 3/8	150 x 9mm
1504	8" x 3/8	200 x 9mm



**Brass Round TB (12mm)**

CODE	SIZE IN INCH	SIZE IN MM
1505	4" x 1/2	100 x 12mm
1506	6" x 1/2	150 x 12mm
1507	8" x 1/2	200 x 12mm
1508	10" x 1/2	250 x 12mm
1509	12" x 1/2	300 x 12mm



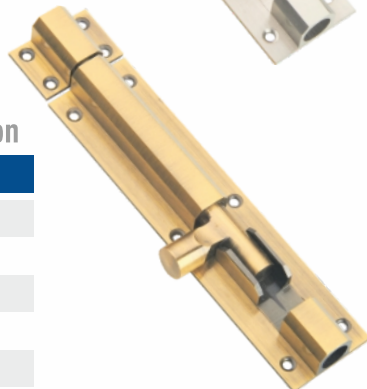
**Brass Parliament Hinges Slow Motion**

CODE	SIZE IN INCH	SIZE IN MM
1201	4 x 4	100 x 100
1202	4 x 5	100 x 125
1203	4 x 6	100 x 150
1204	5 x 4	125 x 100
1205	5 x 5	125 x 125
1206	5 x 6	125 x 150



**Brass Round TB Heavy (16mm)**

CODE	SIZE IN INCH	SIZE IN MM
1510	8" x 5/8	200 x 16mm
1511	12" x 5/8	300 x 16mm
1512	18" x 5/8	450 x 16mm
1513	24" x 5/8	600 x 16mm
1514	36" x 5/8	900 x 16mm



**Brass HEX TB Medium (9mm)**

CODE	SIZE IN INCH	SIZE IN MM
1515	3" x 3/8	75 x 9mm
1516	4" x 3/8	100 x 9mm
1517	6" x 3/8	150 x 9mm

**Brass HEX TB Heavy (12mm)**

CODE	SIZE IN INCH	SIZE IN MM
1518	4" x 1/2	100 x 12mm
1519	6" x 1/2	150 x 12mm
1520	8" x 1/2	200 x 12mm
1521	10" x 1/2	250 x 12mm
1522	12" x 1/2	300 x 12mm
1523	18" x 1/2	450 x 12mm
1524	24" x 1/2	600 x 12mm



**Brass Capsule TB Medium (9mm)**

CODE	SIZE IN INCH	SIZE IN MM
1524	4" x 3/8	100 x 9mm
1525	6" x 3/8	150 x 9mm
1526	8" x 3/8	200 x 9mm
1527	12" x 3/8	300 x 9mm

**Brass Marble L-type Medium (9mm)**

CODE	SIZE IN INCH	SIZE IN MM
1528	4" x 3/8	100 x 9mm
1529	6" x 3/8	150 x 9mm
1530	8" x 3/8	200 x 9mm
1531	12" x 3/8	300 x 9mm

**Brass Gate Hook Regular**

CODE	SIZE IN INCH	SIZE IN MM
1801	2" Length	50mm
1802	2.5" Length	63mm
1803	3" Length	75mm
1804	4" Length	100mm
1805	5" Length	125mm

**Brass Gate Hook Designer Heavy**

CODE	SIZE IN INCH	SIZE IN MM
1806	2" Length	50mm
1807	2.5" Length	63mm
1808	3" Length	75mm
1809	4" Length	100mm
1810	5" Length	125mm

**Brass Baby Latch**

CODE	SIZE IN INCH	SIZE IN MM
1812	3" Deluxe	75mm
1813	4" Deluxe	100mm

**Brass Door Eye**

CODE	SIZE IN INCH	SIZE IN MM
1814	Round	50mm
1815	Round Heavy	63mm
1816	Square	50mm



**Stainless Steel Hinges  
Welded**

S.S. FINISH

CODE	SIZE IN INCH	CODE
2001	6 x 10	2501
2002	6 x 12	2502
2003	5 x 10	2503
2004	5 x 12(H)	2504
2005	5 x 12	2505
2006	5 x 14	2506
2007	4 x 12	2507
2008	4 x 14	2508
2009	3 x 12	2509
2010	3 x 14	2510
2011	3 x 16	2511
2012	3 Cut	2512

ANTIQUÉ FINISH



**Steel Bearing Hinges**

CODE	SIZE IN INCH	FINISH
2301	5x3x3 SS304	SSM
2302	4x3x3 SS304	SSM
2303	5x3x2.5 SS201	SSM
2304	5x3x2.5 SS201	Antique Matt
2305	5x3x2.5 SS201	Matt Black
2306	4x3x2.5 SS201	SSM
2307	5x12(H) - SS304	SSM
2308	4x12(H) - SS304	SSM

**Steel Butterfly Hinges - Flush**

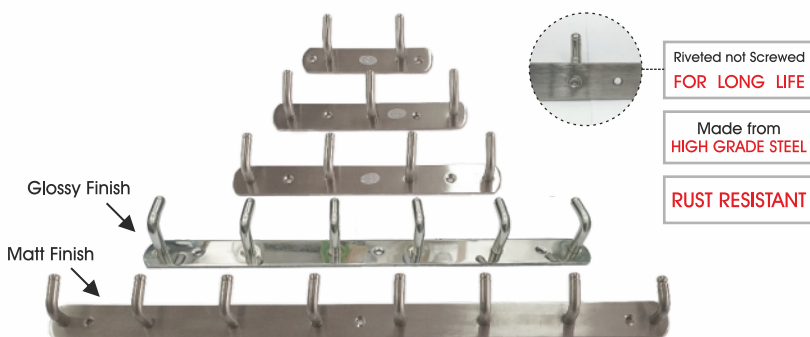
CODE	SIZE IN INCH	FINISH
2309	5"	SSM

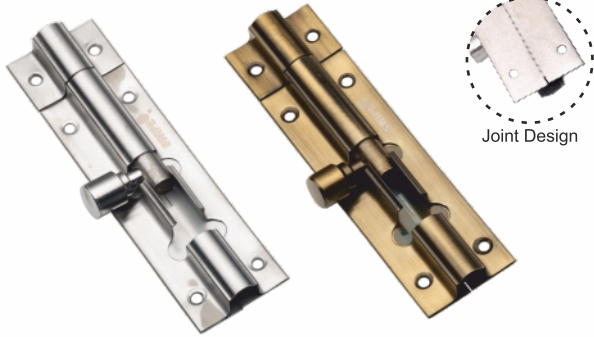
**Stainless Steel  
Plate / Cloth Hook**

S.S. FINISH

CODE	SIZE IN INCH	CODE
2801	2 Points	2806
2802	3 Points	2807
2803	4 Points	2808
2804	6 Points	2809
2805	8 Points	2810

CHROME FINISH





**Stainless Steel TB  
10mm Round**

S.S.FINISH	CODE	SIZE IN INCH	CODE	ANTIQUE FINISH
	2101	4" x 3/8	2601	
	2102	6" x 3/8	2602	
	2103	8" x 3/8	2603	



**Stainless Steel TB  
12mm Round-Joint Less**

S.S.FINISH	CODE	SIZE IN INCH	CODE	ANTIQUE FINISH
	2104	4" x 3/8	2604	
	2105	6" x 3/8	2605	
	2106	8" x 3/8	2606	
	2107	12" x 3/8	2607	

**Stainless Steel  
Window Handle (SS201)**



S.S.FINISH	CODE	SIZE IN INCH	CODE	ANTIQUE GLOSSY
	2201	3mm-5"	2701	
	2202	4mm-7"	2702	
	2203	4mm-8"	2703	



**Stainless Steel  
Concealed Pull Handle - ROUND**



S.S.FINISH	CODE	SIZE IN INCH	CODE	ANTIQUE GLOSSY
	2251	8"	2751	
	2252	10"	2752	
	2253	12"	2753	
	2254	18"	2754	



**Stainless Steel  
Concealed Pull Handle - SQUARE**



S.S.FINISH	CODE	SIZE IN INCH	CODE	ANTIQUE GLOSSY
	2255	8"	2755	
	2256	10"	2756	
	2257	12"	2757	
	2258	18"	2758	



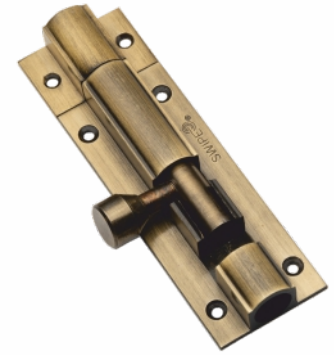


S.S.FINISH

**Aluminium Towerbolt  
Round 10mm (with SS Rod)**

CODE	SIZE IN INCH	CODE
3001	4 x 3/8	3101
3002	6 x 3/8	3102
3003	8 x 3/8	3103

ANTIQUE GLOSSY



S.S.FINISH

**Round 12mm (with SS Rod)**

CODE	SIZE IN INCH	CODE
3004	4 x 1/2	3104
3005	6 x 1/2	3105
3006	8 x 1/2	3106
3007	12 x 1/2	3107
3008	18 x 1/2	3108

ANTIQUE GLOSSY



S.S.FINISH

**Aluminium Super Marble  
10mm (with SS Rod)**

CODE	SIZE IN INCH	CODE
3009	4 x 1/2	3109
3010	6 x 1/2	3110
3011	8 x 1/2	3111
3012	12 x 1/2	3112
3013	18 x 1/2	3113

ANTIQUE GLOSSY



S.S.FINISH

**Aluminium Towerbolt  
Xylo 10mm (with SS Rod)**

CODE	SIZE IN INCH	CODE
3014	4 x 3/8	3114
3015	6 x 3/8	3115
3016	8 x 3/8	3116
3017	12 x 3/8	3117

ANTIQUE GLOSSY



S.S.FINISH

**Xylo 12mm (with SS Rod)**

CODE	SIZE IN INCH	CODE
3018	4 x 1/2	3118
3019	6 x 1/2	3119
3020	8 x 1/2	3120
3021	12 x 1/2	3121
3022	18 x 1/2	3122

ANTIQUE GLOSSY



ANTIQUE GLOSSY

**Aluminium Jumbo Baby Latch**

CODE	SIZE IN INCH	CODE
3091	4"	3191



CHROME POLISH

**Aluminium Shelf Pin**

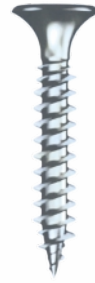
CODE	SIZE IN INCH
3051	Single 3/4"
3052	Double 1"



**Drywall Screw-CSK**

CODE	SIZE IN INCH
5001	DWS BLK 3.5 x 19
5002	DWS BLK 3.5 x 25
5003	DWS BLK 3.5 x 32
5004	DWS BLK 3.5 x 38
5005	DWS BLK 3.5 x 50
5006	DWS BLK 3.5 x 60
5007	DWS BLK 3.5 x 75
5008	DWS BLK 4.2 x 25
5009	DWS BLK 4.2 x 32

**BLACK PHOSPHATED**



**Drywall Screw-CSK**

CODE	SIZE IN INCH
5101	DWS NCK 3.5 x 16
5102	DWS NCK 3.5 x 19
5103	DWS NCK 3.5 x 25
5104	DWS NCK 3.5 x 32
5105	DWS NCK 3.5 x 38
5106	DWS NCK 3.5 x 50
5107	DWS NCK 4.2 x 19
5108	DWS NCK 4.2 x 25
5109	DWS NCK 4.2 x 32
5110	DWS NCK 4.2 x 38
5111	DWS NCK 4.2 x 50
5112	DWS NCK 4.2 x 60
5113	DWS NCK 4.2 x 75

**NICKEL PLATED**



**Drywall Screw-CSK**

CODE	SIZE IN INCH
5401	DWS ABM 3.5 x 19
5402	DWS ABM 4.2 x 25
5403	DWS ABM 4.2 x 32
5404	DWS ABM 4.2 x 38

**ANTIQUE**



**Chipboard Screw-CSK**

CODE	SIZE IN INCH
5201	CBS ZNK 5.0 x 38
5202	CBS ZNK 5.0 x 50
5203	CBS ZNK 5.0 x 60
5204	CBS ZNK 5.0 x 75
5205	CBS ZNK 5.0 x 100

**ZINK PLATED**



**Chipboard Screw -CSK**

CODE	SIZE IN INCH
5251	CBS ZNK 3.5 x 16
5252	CBS ZNK 3.5 x 20
5253	CBS ZNK 3.5 x 25
5254	CBS ZNK 4.0 x 30
5255	CBS ZNK 4.0 x 35
5256	CBS ZNK 4.0 x 40
5257	CBS ZNK 4.0 x 50
5258	CBS ZNK 5.0 x 40
5259	CBS ZNK 5.0 x 50
5260	CBS ZNK 5.0 x 60
5261	CBS ZNK 5.0 x 75
5262	CBS ZNK 5.0 x 100

**MADE IN TAIWAN**

**ZINK PLATED**

**Self Drilling Screw-CSK  
Flat Head**



CODE	SIZE
5301	SDS CSK 3.9 x 13
5302	SDS CSK 3.9 x 19
5303	SDS CSK 4.2 x 25
5304	SDS CSK 4.2 x 32
5305	SDS CSK 4.2 x 38
5306	SDS CSK 4.2 x 50
5307	SDS CSK 4.2 x 60
5308	SDS CSK 4.2 x 75

ZINC PLATED

**Self Drilling Screw  
HEX with EPDM Washer**



CODE	SIZE
5351	SDS HEX 5.5x20
5352	SDS HEX 5.5x25
5353	SDS HEX 5.5x35
5354	SDS HEX 5.5x45
5355	SDS HEX 5.5x55
5356	SDS HEX 5.5x75

ZINC PLATED

**Concrete Nails**



CODE	SIZE
5501	NAILS ZNK - 1"
5502	NAILS ZNK - 1.5"
5503	NAILS ZNK - 2"
5504	NAILS ZNK - 2.5"
5505	NAILS ZNK - 3"
5506	NAILS ZNK - 4"
5507	NAILS ZNK - 5"

ZINC PLATED

**Machine Screw**



CODE	SIZE
5601	M4 - 22mm
5602	M4 - 25mm
5603	M4 - 32mm
5604	M4 - 38mm

ZINC POLISH



**Wooden / Common Nails**

CODE	GAUGE	LENGTH
5701	14 Gauge	1", 1.1/4", 1.1/2", 1.3/4", 2"
5702	17 Gauge	1/2", 3/4", 1", 1.1/4", 1.1/2"
5703	19 Gauge	1/2", 3/4", 1"

ZINC  
POLISH

## Door Closer

**6002 - Imported**  
(upto 65 kg.)



**6003 - Slim**  
(upto 85 kg.)



**6004 - Heavy Duty**  
(upto 100 kg.)



**6005 - Heavy Duty**  
(upto 120 kg.)



**6006 Hold & Open**  
(upto 120 kg.)

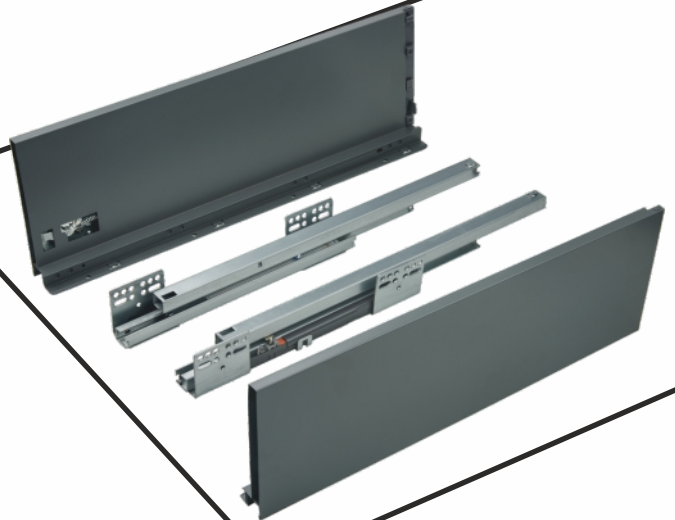
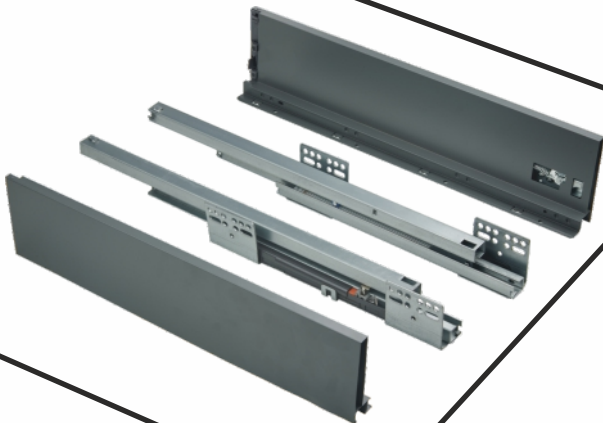


**6008 - Concealed 31mm**  
(upto 85 kg.)



## Kitchen Fittings

### Tandom Box Grey Slim-40kg.



CODE	SIZE IN MM	SIZE IN INCH	LOAD
7201	400mm x 86mm	16" x 4"	40 Kgs
7202	400mm x 115mm	16" x 6"	40 Kgs
7203	400mm x 167mm	16" x 8"	40 Kgs
7204	450mm x 86mm	18" x 4"	40 Kgs
7205	450mm x 115mm	18" x 6"	40 Kgs
7206	450mm x 167mm	18" x 8"	40 Kgs
7207	500mm x 86mm	20" x 4"	40 Kgs
7208	500mm x 115mm	20" x 6"	40 Kgs
7209	500mm x 167mm	20" x 8"	40 Kgs

## Tubular Locks



### Cylinder Tubular Locks Heavy SS304 Ultra Key

CODE	ITEM
6101	Keyed-60mm
6102	Keyless-60mm

S.S.FINISH

### Cylinder Tubular Locks Heavy SS304 Ultra Key

CODE	ITEM
6103	Keyed-60mm
6104	Keyless-60mm

ANTIQUÉ GLOSSY



### Cylinder Tubular Locks Heavy SS201 Normal Key

CODE	ITEM
6105	Keyed-60mm
6106	Keyless-60mm

S.S.FINISH



**SWIPE**  <sup>®</sup>



## Mortise Handles



## SECO

Product	Size	S.S.	A.B.
KY - Long Key Set	7.5"	<input checked="" type="checkbox"/>	<input checked="" type="checkbox"/>
BL - Baby Latch Set	4"	<input checked="" type="checkbox"/>	<input checked="" type="checkbox"/>

**LAMO**



Product	Size	S.S.	A.B.
CY - Cylinder Pin Set	8"	<input checked="" type="checkbox"/>	<input checked="" type="checkbox"/>
KY - Long Key Set	8"	<input checked="" type="checkbox"/>	<input checked="" type="checkbox"/>
BL - Baby Latch Set	5"	<input checked="" type="checkbox"/>	<input checked="" type="checkbox"/>

**TEDO**



Product	Size	S.S.	A.B.
CY - Cylinder Pin Set	8"	<input checked="" type="checkbox"/>	<input checked="" type="checkbox"/>
KY - Long Key Set	8"	<input checked="" type="checkbox"/>	<input checked="" type="checkbox"/>
BL - Baby Latch Set	5"	<input checked="" type="checkbox"/>	<input checked="" type="checkbox"/>



**GLOW**

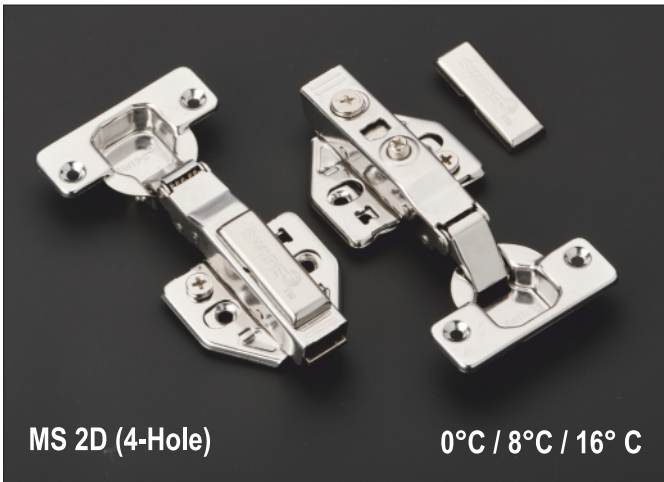
Product	Size	S.S.	A.B.
CY - Cylinder Pin Set	8"	<input checked="" type="checkbox"/>	<input checked="" type="checkbox"/>
KY - Long Key Set	8"	<input checked="" type="checkbox"/>	<input checked="" type="checkbox"/>
BL - Baby Latch Set	5"	<input checked="" type="checkbox"/>	<input checked="" type="checkbox"/>



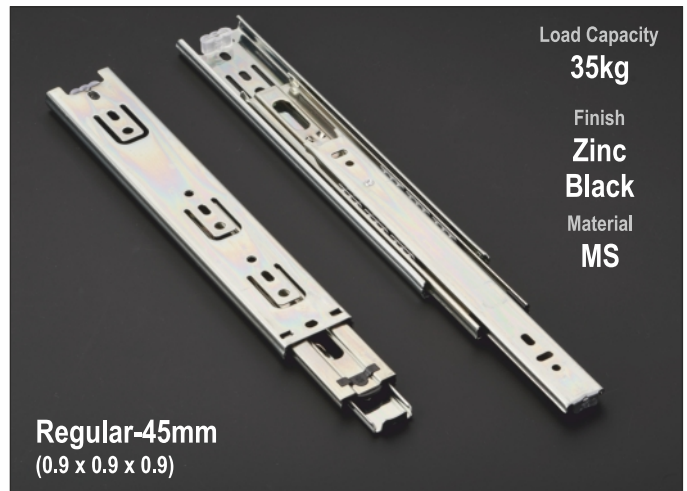
**LUDO**

Product	Size	S.S.	A.B.
CY - Cylinder Pin Set	8"	<input checked="" type="checkbox"/>	<input checked="" type="checkbox"/>
KY - Long Key Set	8"	<input checked="" type="checkbox"/>	<input checked="" type="checkbox"/>
BL - Baby Latch Set	5"	<input checked="" type="checkbox"/>	<input checked="" type="checkbox"/>

**Auto Hinges**



# Telescopic Channel





**SS Door Magnet**

CODE	ITEM	FINISH
9101	Goty - 838	Stainless Steel
9102	Goty - 838	Antique Glossy

**SS Door Magnet**

CODE	ITEM	FINISH
9103	Trio - 884	Stainless Steel
9104	Trio - 884	Antique Matt
9105	Trio - 884	Matt Black

**Zinc Door Magnet**

CODE	ITEM	FINISH
9106	Oblo-923	Stainless Steel
9107	Oble-923	Antique Matt
9108	Oble-923	Matt Black



**Aluminium Door Stopper**

CODE	SIZE IN INCH	FINISH
9001	5" - Sun	SSM
9002	5" - Sun	Antique Glossy
9003	6" - Sun	SSM
9004	6" - Sun	Antique Glossy



**Brass Door Stopper**

CODE	SIZE IN INCH	FINISH
9005	5" - Sun	SSM + ABG
9006	6" - Sun	SSM + ABG



**Zinc Door Stopper**

CODE	SIZE IN INCH	FINISH
9007	5" - OME	SSM
9008	5" - OME	Antique Matt
9009	5" - OME	Matt Black



**SS201 Door Stopper Half**

CODE	SIZE IN INCH	FINISH
9010	Half D	Stainless Steel
9011	Half D	Matt Black



### Available Finishes



S.S. FINISH



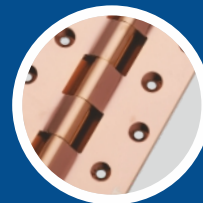
ANTIQUE



SATIN LAQUER



GRAPHITE



ROSE GOLD

Mfg. By:

**SWIPE INDUSTRIES**

📍 Shed No.84/3, Shanker Tekri,  
Nr. bhagwati Wooden, GIDC, Jamnagar-361004.

☎ Customer Care : 95388 77245